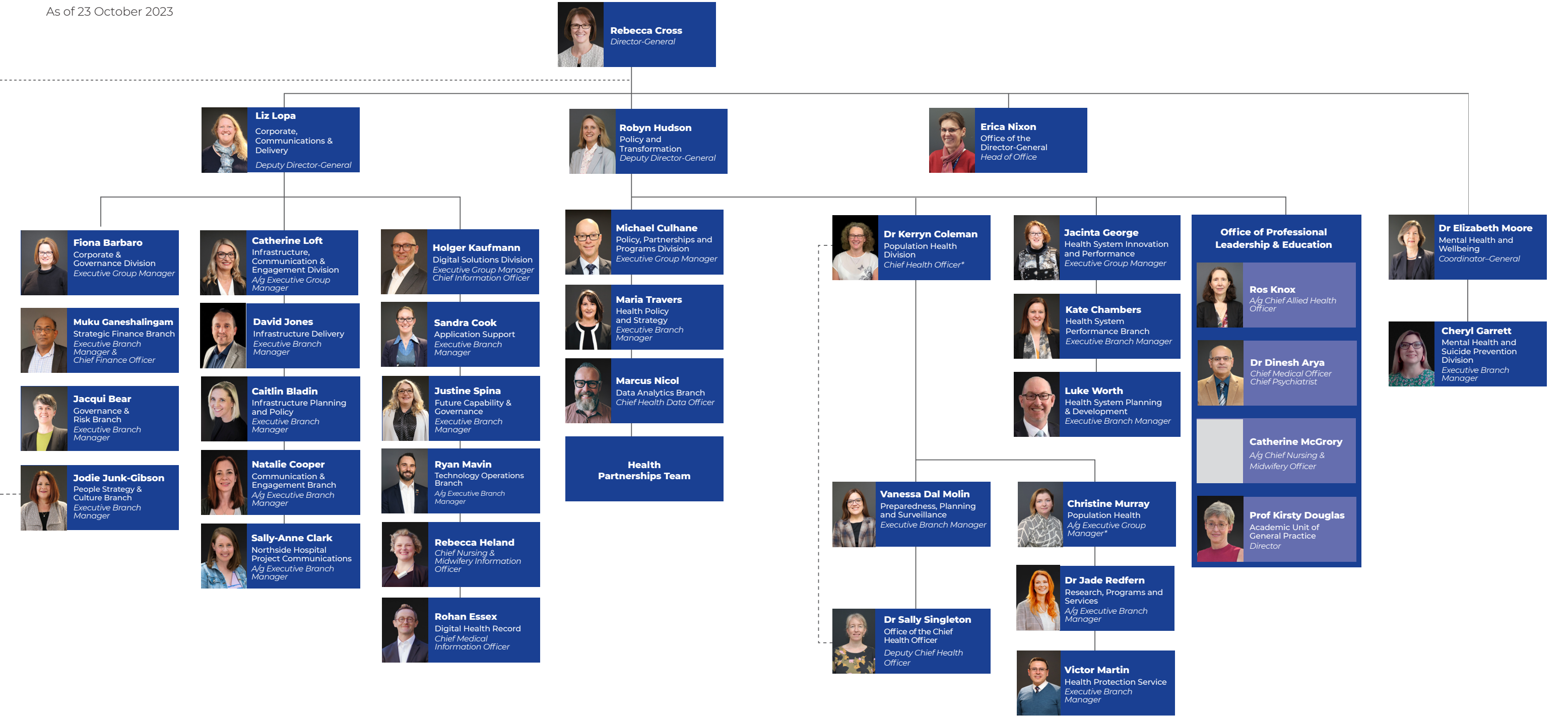


ORGANISATIONAL CHART

As of 23 October 2023



*DDG has line responsibility for the highest priority activities across the Directorate.

*The EBM People Strategy reports to EGM Corporate & Governance, but also has direct reporting relationship to the Director-General on health system-wide workplace culture matters.

*The Chief Health Officer and the EGM Population Health Division have shared responsibilities for the Population Health Division. The EGM is responsible for the non-legislative, executive management functions and the CHO is responsible for all legislated functions associated with the CHO role.