

# End of Life and Palliative Care Education Pathways in the ACT



**Learning Outcome: to be able to deliver a culturally appropriate palliative care approach for all people with a life-limiting illness, their families, and carers.**



The ACT Health Directorate and other services such as Calvary Public Hospital Bruce are committed to providing quality end of life and palliative care. To assist staff to provide such care that meets patient and family/carer needs as well as accreditation requirements, the following End of Life and Palliative Care Education Pathways are recommended.

All training / education must be approved by the trainee's manager and completed training/ education must be recorded on each organisations learning platform. For external courses, the trainee will need to provide their completion certificate to their Clinical Development Nurse or Manager. If there is no one available in the trainee's area.

Further information on the ACT End of Life and Palliative Care Education Pathway contact [toni.ashmore@act.gov.au](mailto:toni.ashmore@act.gov.au).

## Recommended Modules

### Acute and Sub-Acute Settings

Staff Group	Education	Delivery	Time frame	Pre-Requisite
<b>Registered Nurses working in all areas where end of life care is provided (except neonatology and paediatric palliative care – see neonatology section and paediatric palliative care sections)</b>	<a href="#">End of Life Essentials Modules</a> Complete all modules under <ul style="list-style-type: none"> <li>» Understanding death and dying</li> <li>» Clinical Skills with end of life care</li> </ul> Complete optional modules recommended depending on work area <ul style="list-style-type: none"> <li>» End of Life care with different patients</li> </ul>	Online	20 minutes per module	Nil
	<a href="#">Comfort Care Support at the End of Life Ward/ unit in-service</a>	Face to face	30 min	Nil
	<a href="#">End of Life Law for Clinicians (ELLC)</a>	Online	4 hours	Nil
	<a href="#">Advance Care Planning (Capabiliti)</a>	Online	20 min	Nil
	<a href="#">Graduate Nursing Program – Introduction to Palliative Care / Communication and Clinical Issues</a>	Face to face	2 one hour sessions	Nil
	<b>Nursing/ Medical staff in Neonatology</b>	<a href="#">Neonatal End of Life Care in NICU Workshops</a>	Face to face	4 hours
<b>Paediatric Palliative Care*</b>	<a href="#">QuoCCA Communication Learning Module</a>	Mixed	Flexible	Nil
	<a href="#">End of Life Champion Program</a> And/or Have or working towards a Post Graduate qualification in palliative care (paediatric elements) for permanent and ongoing appointments within paediatric palliative care	Face to Face	Flexible	Recommended End of Life Education modules

Staff Group	Education	Delivery	Time frame	Pre-Requisite
Specialist Palliative Care (Adults)	Requirements for all staff AND End of Life Champion Program AND			
	Learning plan completed for ongoing demonstration and development of specialist palliative care skills including:  Clinical assessment and management, communication and ethics, leadership and teamwork, education, quality improvement, and self-care	Mixed	Flexible	Nil
Enrolled Nurse	<b>PCC4U Enrolled Nurse Toolkit</b> » <a href="#">Principles of palliative care</a> » <a href="#">Communicating with people with life-limiting conditions</a> » <a href="#">Principles of symptom assessment and management</a> » <a href="#">Assessment and management of pain</a> » <a href="#">Optimising function in palliative care</a> » <a href="#">Terminal care and bereavement support</a>	Online	3 hours	Nil
	<b>Palliative Care in Practice (delivered in conjunction with the PCC4U Enrolled Nurse Toolkit)</b>	Face to Face	6 hours	PCC4U Enrolled Nurse toolkit is a co-requisite
Assistant in Nursing/ Allied Health Assistants	<b>PCC4U Care Worker Toolkit</b> » <a href="#">The principles and aims of a palliative approach</a> » <a href="#">Supporting care</a> » <a href="#">Providing care</a> » <a href="#">End of life care strategies</a> » <a href="#">Managing your own emotional responses</a>	Online	30 minutes per module	Nil
	<b>Palliative Care in Practice (delivered in conjunction with the PCC4U Careworker Toolkit)</b>	Face to Face	6 hours	PCC4U Care worker Toolkit is a co-requisite
Medical Officers (excluding neonatology)	<b>End of Life Essentials Modules</b> Complete all modules under » Understanding death and dying » Clinical Skills with end of life care  Complete optional modules recommended depending on work area » End of Life care with different patients	Online	20 minutes per module	Nil
	<b>ELLC End of Life Law for Clinicians</b>	Online	4 hours	Nil
	<b>Patient centred Communication and shared decision making at end of life</b>	Face to Face	1 Day	Nil
	<b>Advance Care Planning (Capabiliti)</b>	Online	20 min	Nil
	<b>Deprescribing palliative care (reading)</b>	Online	Flexible	Nil

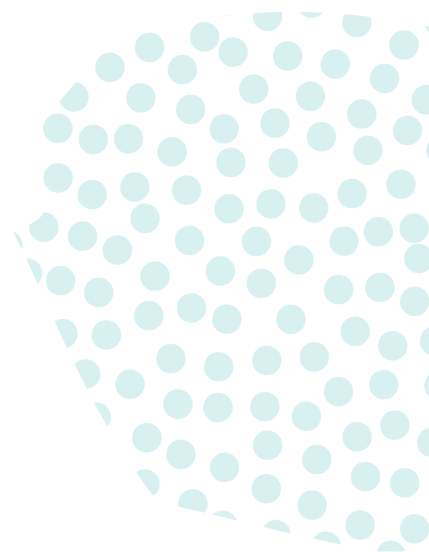
Staff Group	Education	Delivery	Time frame	Pre-Requisite
<b>Allied Health Professionals working in areas where end of life care is being delivered (exc Pharmacy)</b>	<a href="#">End of Life Essentials Modules</a> Complete all modules under <ul style="list-style-type: none"> <li>» Understanding death and dying</li> <li>» Clinical Skills with end of life care</li> </ul> Complete optional modules recommended depending on work area <ul style="list-style-type: none"> <li>» End of Life care with different patients</li> </ul>	Online	20 minutes per module	Nil
	<a href="#">Comfort Care Support at the End of Life Ward in-service</a>	Face to Face	30 min	Nil
	<a href="#">Bereavement (Social Work and Psychology – to be developed)</a>	Face to Face	3 hours	Nil
	<a href="#">Advance Care Planning (Capabiliti)</a>	Online	20 min	Nil
	<a href="#">ELDAC End of Life Law for the Aged Care Sector</a>	Online	1 hour	Nil
<b>Hospital based Pharmacists</b>	<a href="#">End of Life Essentials Modules</a> Complete all modules under <ul style="list-style-type: none"> <li>» Understanding death and dying</li> <li>» Clinical Skills with end of life care</li> </ul> Complete optional modules recommended depending on work area <ul style="list-style-type: none"> <li>» End of Life care with different patients</li> </ul>	Online	20 min per module	Nil Nil Commission and PSA Community Pharmacist Palliative Care Essential CPE
	<a href="#">NSW Clinical Excellence Commission and the Pharmaceutical Society of Australia (PSA) Community Pharmacists Palliative Care Essential CPE</a>	Online	3 hours	Nil
	<a href="#">Responding to end of life and palliative care needs in the Pharmacy setting – PEPA</a>	Face to face	4 hours	EOL Essentials / NSW Clinical Excellence
	<a href="#">ELLC End of Life Law for Clinicians</a>	Online	Flexible	
	<a href="#">RACGP Guidelines – Palliative Care</a>	Online	Flexible	
	<a href="#">Gold Standards Prognostic Indicators</a> OR <a href="#">PEPSICOLA framework</a> <a href="#">Relevant HealthPathway resources</a> <ul style="list-style-type: none"> <li>» <a href="#">Advance Care Planning</a></li> <li>» <a href="#">Management of the Terminal Phase</a> - this pathway provides links to other relevant pathways such as the <a href="#">Palliative Care Pain Management</a> pathway</li> <li>» <a href="#">Palliative Care Pain Medications</a>  <a href="https://actsnsw.communityhealthpathways.org/13454.htm">https://actsnsw.communityhealthpathways.org/13454.htm</a>            Username: together ; Password: for health)</li> </ul>	Online	Flexible	

Staff Group	Education	Delivery	Time frame	Pre-Requisite
Security Officers	Security Officers: Responding to family and carers of patients who are at end of life	Face to Face	1 hour	Nil
Wardsmen	Wardsmen: Responding to patients who are at end of life and their family/ carers	Face to Face	1 hour	Nil
Administration Staff	Responding to patients who are at end of life and their family/ carers	Face to Face	1 hour	Nil

## End of Life Champions

An End of Life Champions Program is available to Registered nurses, Allied Health Professionals and Medical Officers for staff who would like to enhance their end of life care skills and provide support and mentoring to others in their work area.

Further information on the End of Life Champion Program can be found on the ACT Health Directorate Website or through your manager.



If you have difficulty reading a standard printed document and would like an alternative format, please phone 13 22 81. If English is not your first language and you need the Translating and Interpreting Service (TIS), please call 13 14 50. For further accessibility information, visit:



[www.health.act.gov.au/accessibility](http://www.health.act.gov.au/accessibility)  
[www.health.act.gov.au](http://www.health.act.gov.au) | Phone: 132281  
 © Australian Capital Territory, Canberra March 2021