

ACT Influenza Report No. 9

Summary: The numbers of influenza cases reported to ACT Health indicate decreased influenza activity in the month of October, consistent with expected seasonal patterns and national trends.

This will be the last influenza report for 2015.

Influenza notifications

Reporting Period: 1 January to 31 October 2015, Weeks 1-44

Between 1 January and 31 October 2015, there were 1,172 notifications of influenza reported in the Australian Capital Territory. This is slightly less than that received for the same period in 2014 (n=1,206). In the previous 5 years, the average number of cases reported in the same period was 537 (Table 1). Forty-two percent (n=492) of notifications were influenza A. Of the 109 influenza A notifications with subtype information available, 47 (43%) were H1N1 and 62 (57%) were H3 (presumed H3N2). The proportion of influenza B cases is greater in 2015 compared to previous years (Table 1).

Of the 1,172 notifications received year to date, 54% (n=633) were in females. Most notifications were in 0 to 9 year olds (n=223, 19%), followed by 30 to 39 year olds (n=176, 15%) (Fig 2). In 2015, a higher proportion of children were affected than in 2014, with 0 – 19 year olds representing 31% of notifications (n=362) in 2015 compared to 22% in 2014 (n=272). The median age of cases was 34 years in 2015 compared to 39 years in 2014.

Fig 1. Number of influenza notifications in the Australian Capital Territory, by week and year of onset, 2011 – 2015.

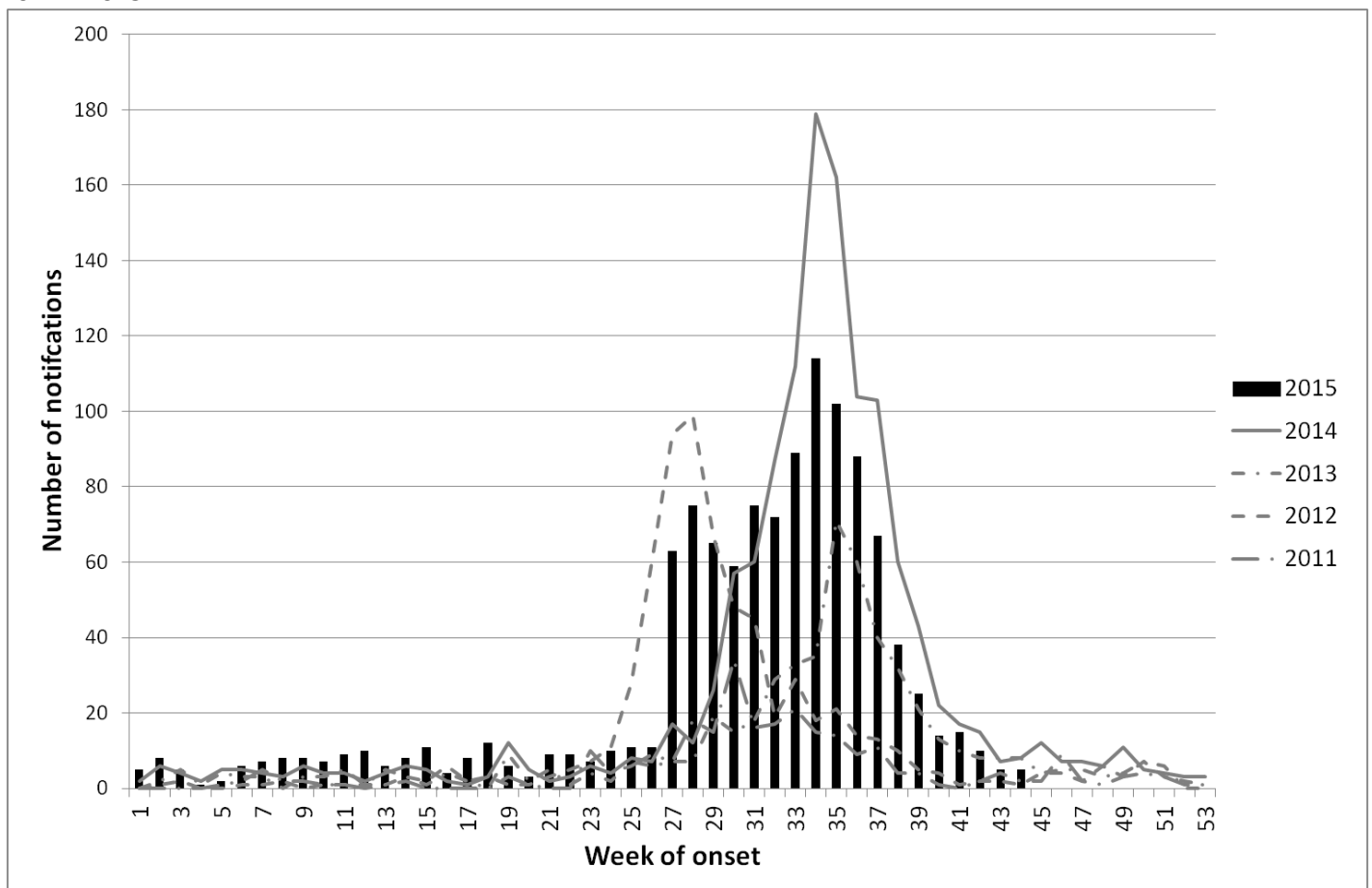
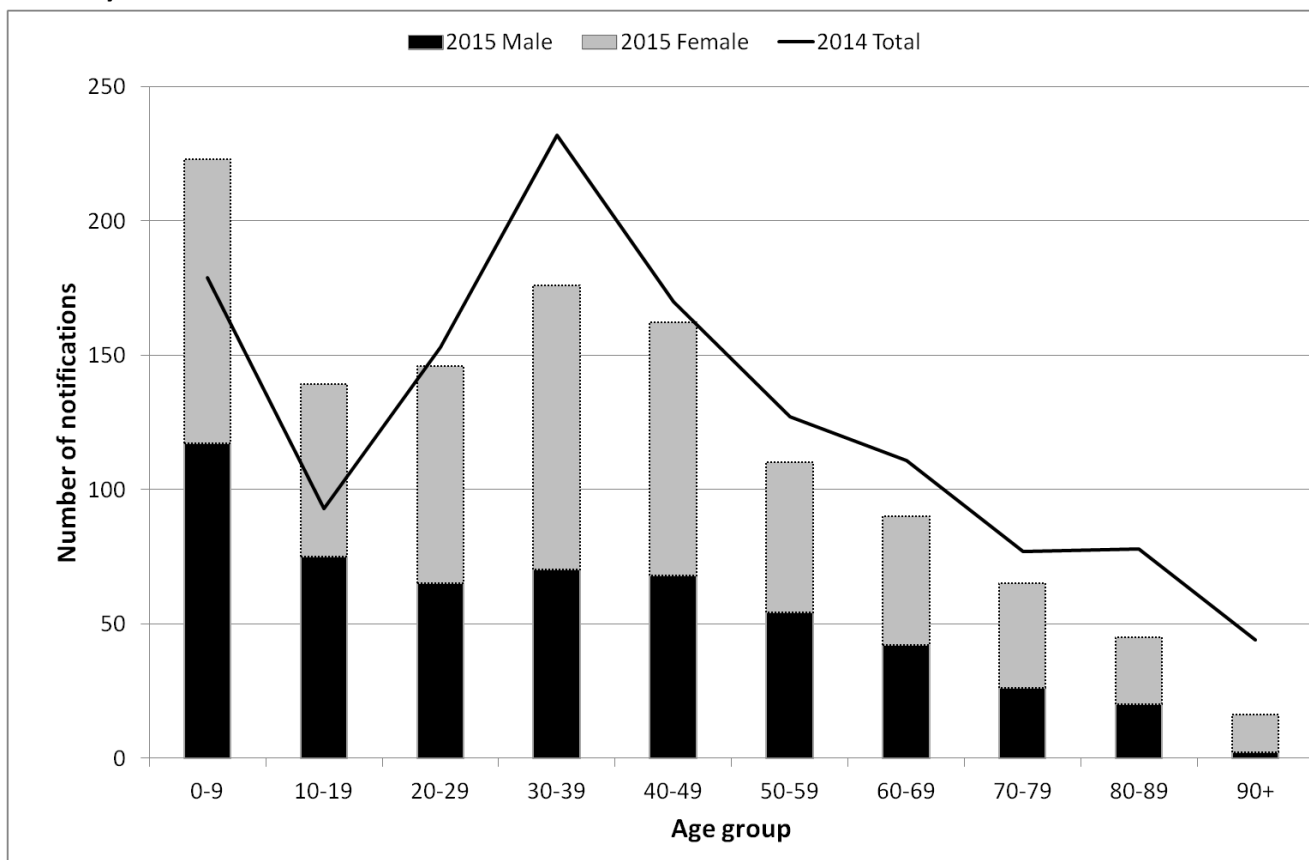


Table 1. Number of influenza A and B notifications[^] in the Australian Capital Territory, by month and year of onset, 2010 – 2015.

		Jan	Feb	Mar	Apr	May	Jun	Jul	Aug	Sep	Oct	Nov	Dec
INFLUENZA A	2010	0	1	2	4	1	5	16	21	26	7	5	4
	2011	1	11	4	0	5	27	81	47	16	7	11	7
	2012	2	3	3	11	4	90	302	68	18	7	11	13
	2013	11	6	14	9	12	12	31	102	79	30	15	14
	2014	17	15	14	15	22	26	150	536	288	49	17	18
	2015	20	24	28	26	24	36	132	106	76	20	0	0
INFLUENZA B	2010	0	0	0	0	0	0	0	2	0	1	0	0
	2011	0	0	1	0	2	4	7	22	8	1	5	3
	2012	1	1	1	4	5	18	31	38	25	3	4	4
	2013	0	3	1	1	5	8	24	76	76	14	3	3
	2014	2	2	2	0	1	3	5	25	23	11	15	8
	2015	1	5	7	10	7	25	174	298	134	19	0	0

[^]Data provided for the current and most recent month may be incomplete.

Fig 2. Age and sex of influenza notifications in the Australian Capital Territory, 1 January to 31 October 2015 and 1 January to 31 December 2014.



All data are preliminary and subject to change as updates are received. Notification data includes all cases diagnosed in the ACT in residents of the ACT. Generally, notified cases represent only a small proportion of cases of influenza occurring in the community.

Notification data were exported on 6 November 2015 for the period 1 January 2010 to 31 October 2015, by onset date. Source: Notifiable Diseases Database, ACT, Communicable Disease Control Section, ACT Health.