

# BLADDER TAP

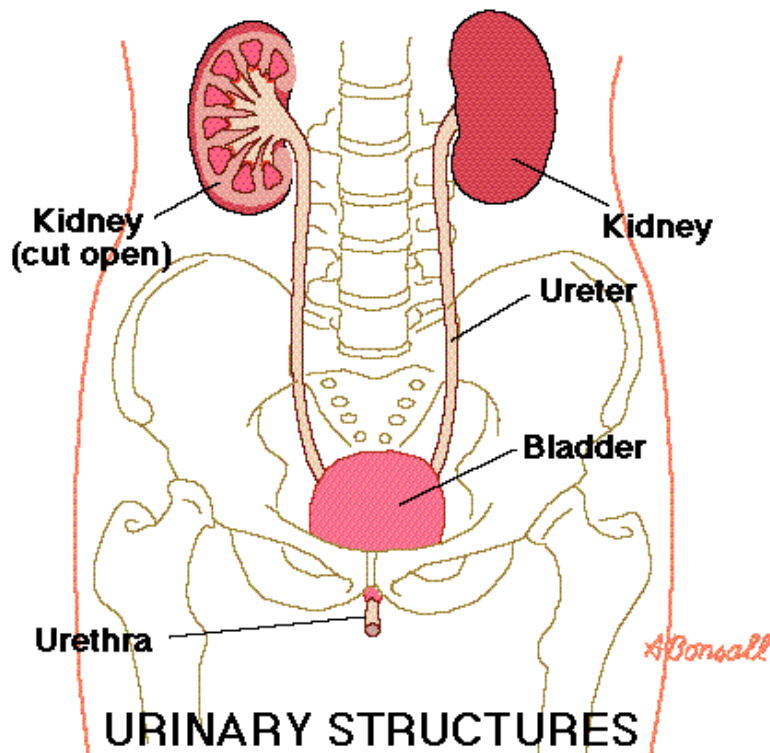
## Why is a bladder tap required?

A bladder tap is a procedure that involves taking urine directly from the bladder to test for a urinary tract infection. The doctor inserts a small needle into the bladder directly through the skin to collect the urine. A bladder tap is a safe procedure and complications are very rare. Occasionally there may be some blood in the urine for a day or so afterwards. As with any injection there is some associated mild discomfort and as such your baby will be given sucrose to minimize any discomfort they may experience during the procedure.

## What other ways can you collect urine?

### Urinary Catheter

A tube is inserted into your baby's bladder through the urethra (the external opening of the bladder) to collect urine. There may be some associated discomfort with this procedure and your baby will be given sucrose to minimize and discomfort.



## Bag Specimen

A bag is adhered to the skin inside the nappy to catch the urine. Unfortunately many baby's will pass stool at the same time as urine and contaminate the sample requiring a number of attempts to successfully get a clean urine.

The bladder tap is the "gold standard" method of collection as it cannot be contaminated and is the quickest way to collect urine to determine whether your baby has an infection. An ultrasound may be used to help visualize the bladder to assist in the urine collection. With any type of sampling several attempts may be required to obtain the sample.

If you have any further questions please ask the medical and nursing staff.

fact sheet